



SENSE  
O F  
LIGHT

Epoch Lighting  
[www.lighting-epoch.com](http://www.lighting-epoch.com)

Air Bridge of Taiwan Taoyuan International Airport



# Sense of Light, Sense for Life

Epoch Chemtronics Corp., founded in 1997, is a leading company of small and medium-sized backlight module production for applications such as GPS, smart phones, tablets and industrial computers. And in 2010, Epoch launched own brand name Epoch Lighting® for the LED lighting solution.

The Epoch Lighting® quality system is certified by the world's leading certification organization, TÜV SÜD Group, to ISO-9001 standards. Everything we do is built around quality; from product development to production.

Good product quality begins with the correct product development process. We follow a clearly documented product development system that is rigorously controlled at each stage, to ensure that every component is well designed, verified and tested before being released for mass production.

During production, we automate our process as much as possible to minimize handling and errors, and to continuously improve efficiency and quality. In order to achieve our quality goal, we fully assemble each product, and once assembled, run it through a three-hour burn-in process. Following this protocol each product is 100% functionally tested to guarantee full working order before shipping.

To minimize down time is Epoch's promise. Our goal is to be number one in service quality in the industry so all Epoch partners and customers can enjoy our service at its best.



# Taiwan Collections

- ◆ **Innovative Technique :**  
As a professional expert of lighting, we have strong know-how in optics, mechanism, heat dissipation and electrics to develop.
- ◆ **Comfortable Lighting :**  
Cosy, low glare, no flicker lighting we create a soft and vigorous environment to our customers.
- ◆ **Certificate :**  
Epoch's factory has certificated the ISO 9001, ISO14001, TS16949, OHSAS18001 and CE for products by third party - TÜV SÜD.





## Awards

Epoch won the prize of Red Dot Award : Product Design, Taiwan Excellence Award, Innovation Award in Taiwan Int'l Lighting Show to show the technique of lighting.

◆ **LED Down Light - Premium :**

Taiwan Excellence Award / LED inside Aurora Award / Innovation Award in Taiwan Int'l Lighting Show

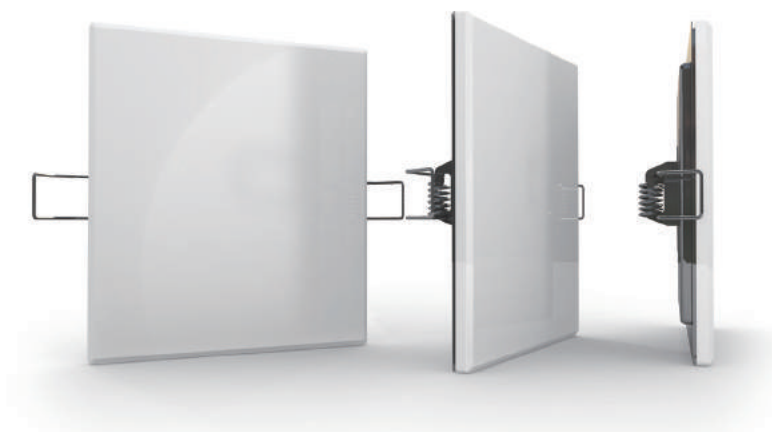
◆ **epoXcube™ - Classic :**

Taiwan Excellence Award / Innovation Award in Taiwan Int'l Lighting Show

◆ **epoLoveWing™ - Classic :**

Innovation Award in Taiwan Int'l Lighting Show

# Quality



# Product Table

## 01 LED Panel Light 7 ~ 10



3 in 1 type | 9 ~ 10

## 02 epoSmiley™ 11 ~ 14



C Type | 13 ~ 14



U Type | 13 ~ 14

## 03 epoLoveWing™ 15 ~ 20



Classic | 17 ~ 18



Wall Light | 19 ~ 20

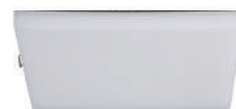
## 04 LED Down Light 21 ~ 28



Premium | 23 ~ 24



Economic | 25 ~ 26



epoXcube™ | 27 ~ 28

## 05 Installation Case 29 ~ 36

Office | 29 ~ 30

Hospital | 33 ~ 34

Commercial Spaces | 31 ~ 32

Home | 35 ~ 36

## 06 LED Lighting Concepts 37 ~ 40

LED Lighting Concepts | 37

Calculation of Power Saving | 39

Tips On Purchasing LED Lighting | 38

Epoch Lighting FAQ | 40



# LED Panel Light



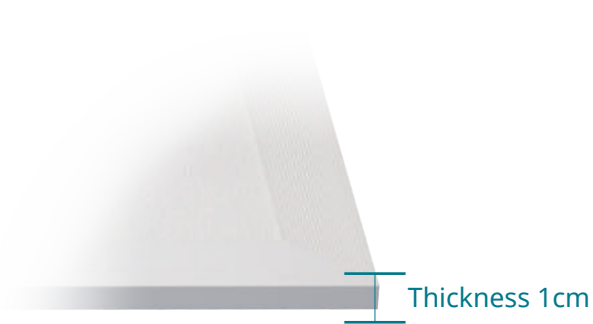
### ◆ Cosy Light

Uniformity, low glare, no flicker, no blue light hazard.



### ◆ Ultra-slim

It can efficiently take use of small space on the ceiling.



### ◆ Large beam angle

Adopted to optical material, up to 110 degree large beam angle to make the entire space bright.



### ◆ Outstanding heat dissipation

Aluminum backward makes great heat dissipation.



### ◆ High driving fit

To avoid and reduce maintenance frequency from dust and insects.



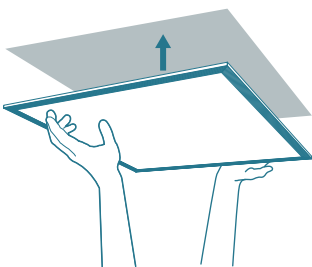
# LED Panel Light

## 3 in 1 type ( Recessed / Mounted / Suspended )

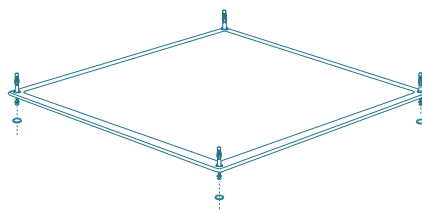


### Product identity

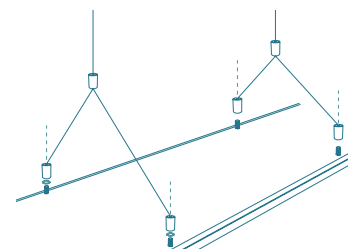
- LED edge-lit technology, ultra-thin design, slim and simple, thickness <11 mm.
- Uniform light, low glare.
- Multiple installation, recessed, direct mounted, suspended.
- Energy-saving, eco-friendly for the environment.



Recessed



Direct Mounted



Suspended



## Recommended area

Office / Factory / School /  
Hospital / Museum



## Specification

Model	Dimension	Power Consumption	Color Temperature	Lumious Flux	Luminous Efficiency	Illumination (1m)	Illumination (2m)	Beam angle
EF164-16YC	295 x 295 x 10 mm	16 W	○ 5300K ● 4000K	1500 lm	94 lm/W	500 lux	125 lux	115° / 115°
EF331-35YC-4	595 x 595 x 10 mm	32.2 W	○ 5700K ● 4000K	3600 lm	112 lm/W	1200 lux	300 lux	
EF331-56YC-4		52 W	○ 5700K ● 4000K	5400 lm	104 lm/W	1800 lux	450 lux	
EF485-35YC-4	1195 x 295 x 10 mm	32.2 W	○ 5700K ● 4000K	3600 lm	112 lm/W	1200 lux	300 lux	
EF485-56YC-4		52 W	○ 5700K ● 4000K	5400 lm	104 lm/W	1800 lux	450 lux	

Installation : recessed / mounted / suspended ; Operating voltage : 90~264 VAC ; Life design : 40,000 hours

CRI : 80 ; Class 3 ; Usage temperature : -20°C ~ +40°C

Y indicates Color Temperature of luminaire, D : 4000K ; J : 5300K ; G : 5700K

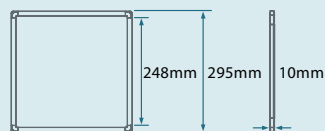
Tolerance range of product's specification accepts in  $\pm 10\%$

The above specification is the standard value , the company reserves the right to revise the specification without prior notice to improve reliability, function or design.

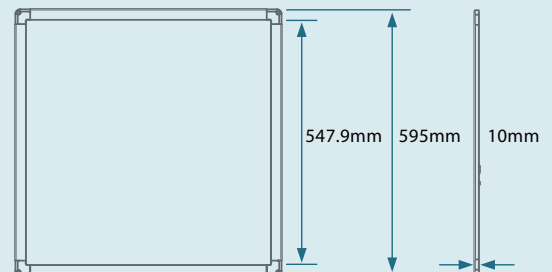


## Mechanical Drawing

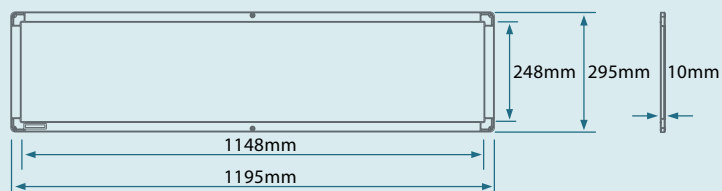
EF164



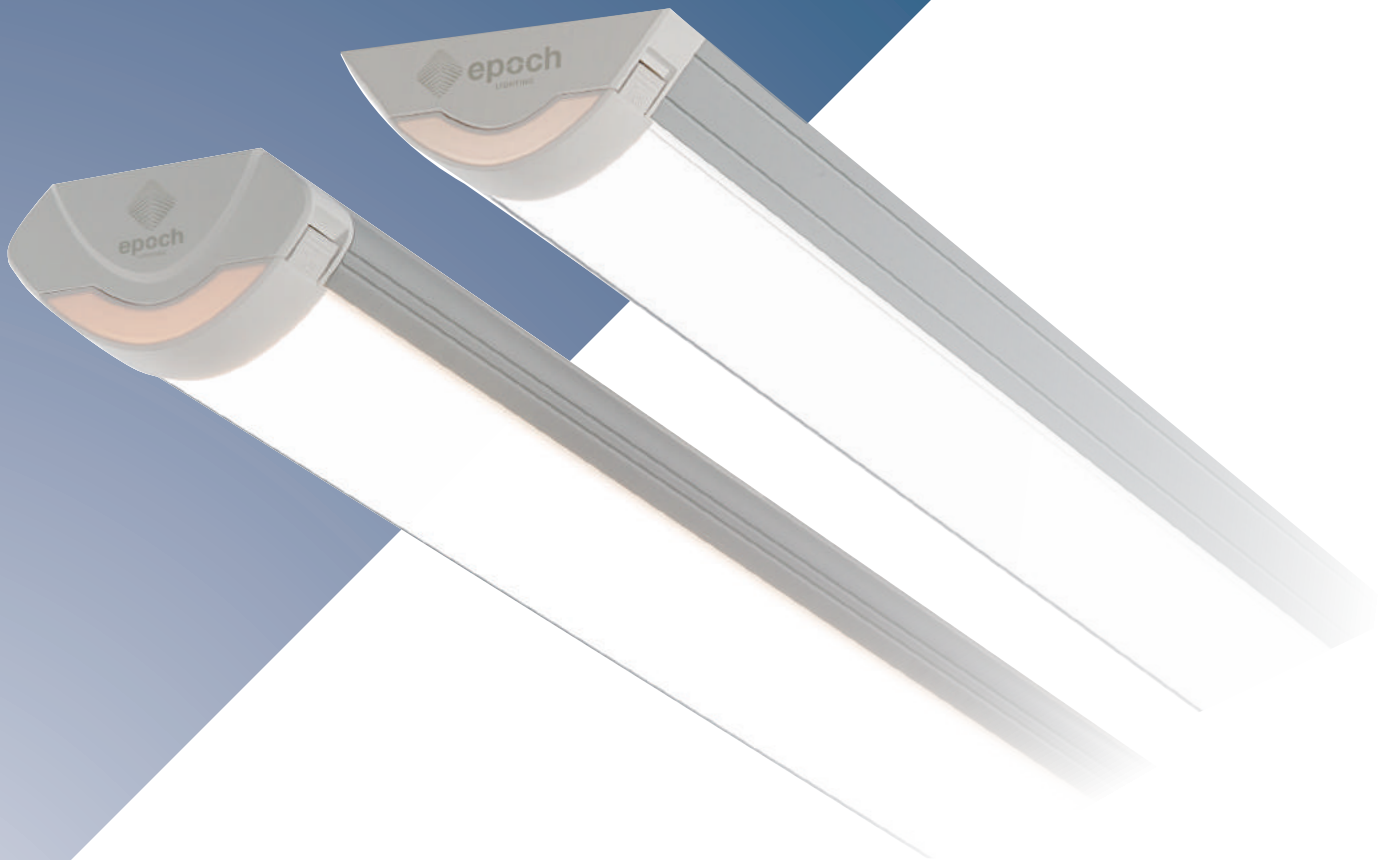
EF331



EF485



# epoSmiley™



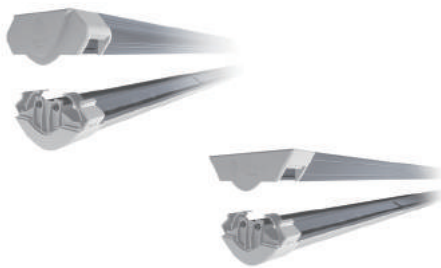
◆ < 5cm Slim



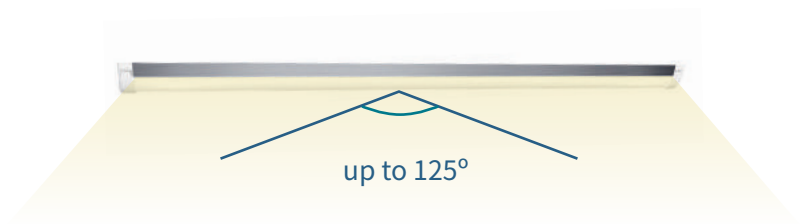
◆ 3-in-1 ( Light source, holder and driver )



◆ Replaceable light source



◆ Large beam angle



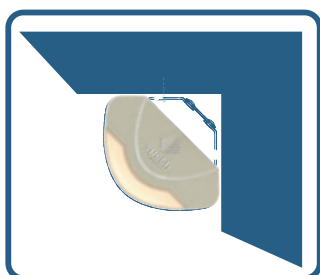
◆ 110 lm/w high efficacy



◆ Anti-dropping design



◆ Multiple installation





# epoSmiley™

DP485



Replace to **92W**  
4' Retrofit light

C type



U type



## Product identity

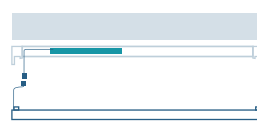
- Light source, holder and driver are 3-in-1 integrated design.
- Accessories allow for installation at right angle ( U type ), easy installation with individual mounting.
- Ideal replacement for retail store, supermarket, and corridor.



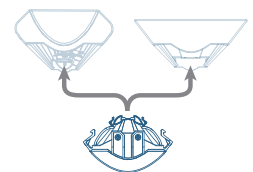
Mount the holder with screws



Connecting AC wire with driver



Connecting driver with DC wire



Buckle Light source with holder

## Recommended area



Supermarket / Office / Home / Commercial spaces

## Specification

Model	Dimension	Power Consumption	Color Temperature	Lumious Flux	Luminous Efficiency	Illumination (1m)	Illumination (2m)	Beam angle
DP485-28YC-1C	1230 x 100 x 41.2 mm	28 W	○ 5700K	3080 lm	110 lm/W	880 lux	220 lux	125°/ 115°
DP485-28YC-1U	1234 x 85 x 48 mm		● 4000K					

Installation : direct mounted ; Operating voltage : 90~264 VAC ; Life design : 40,000 hours  
 CRI : 80 ; Class 1 ; Usage temperature : -20°C ~ +40°C

Y indicates Color Temperature of luminaire , D : 4000K ; G : 5700K

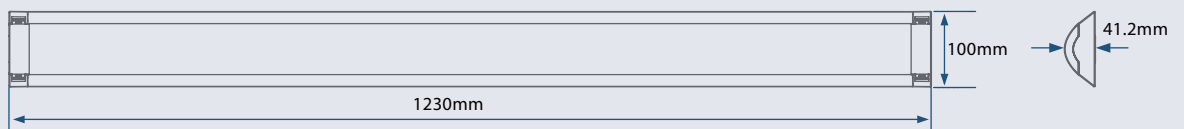
Tolerance range of product's specification accepts in ± 10%

The above specification is the standard value , the company reserves the right to revise the specification without prior notice to improve reliability, function or design.

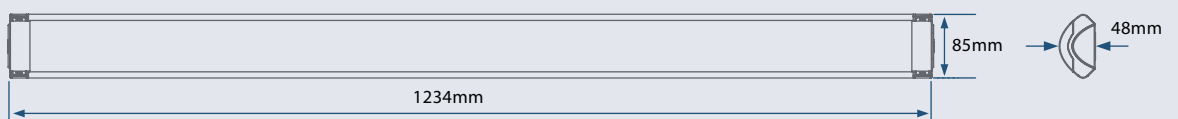


## Mechanical Drawing

DP485-28YC-1C

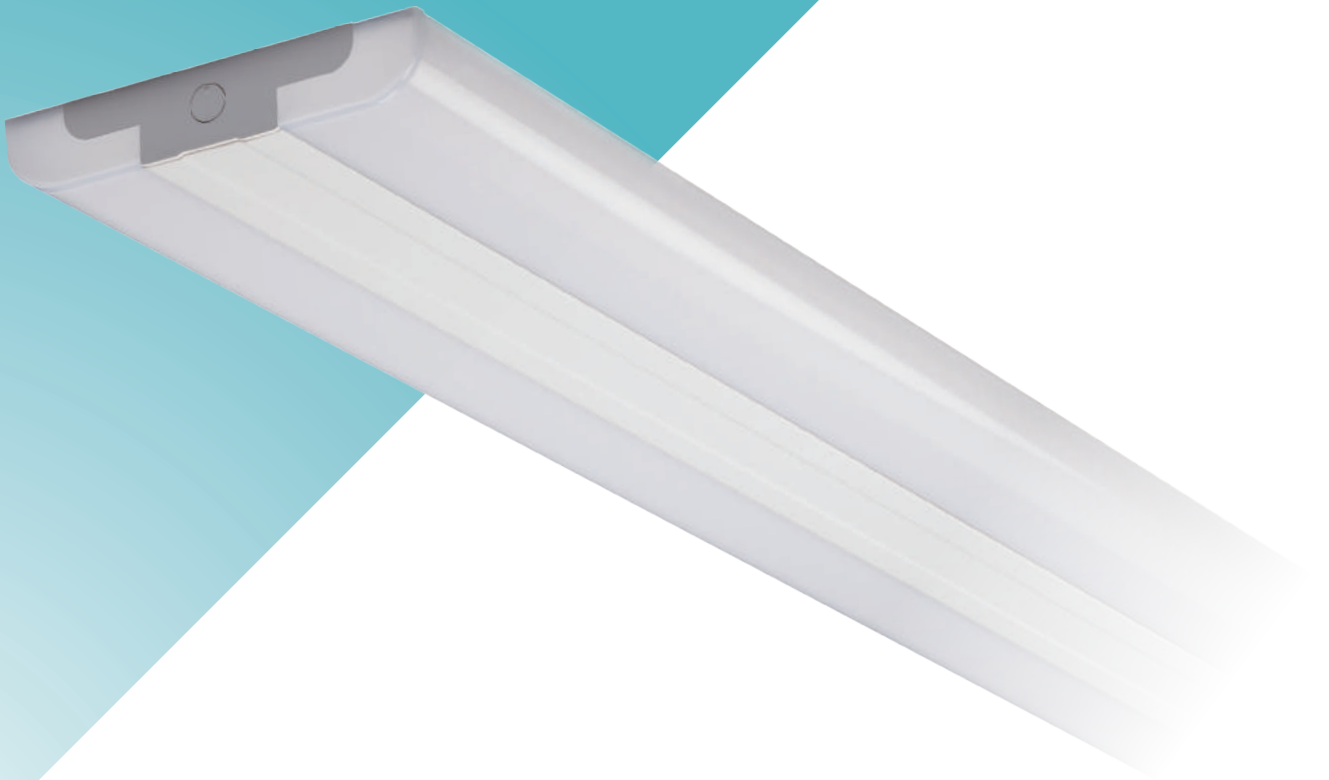


DP485-28YC-1U



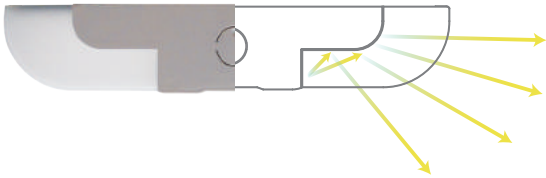


# epoLoveWing™





◆ Multi-reflection design



◆ Integrated design



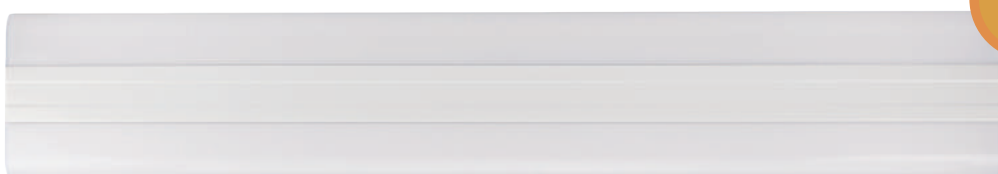
◆ Ultra-Slim design



◆ Back side uplight



◆ > 90 lm/w High efficacy



> 90  
lm/w

# epoLoveWing™ Classic

DP477



Replace to **92W**  
4' Retrofit light

DP252

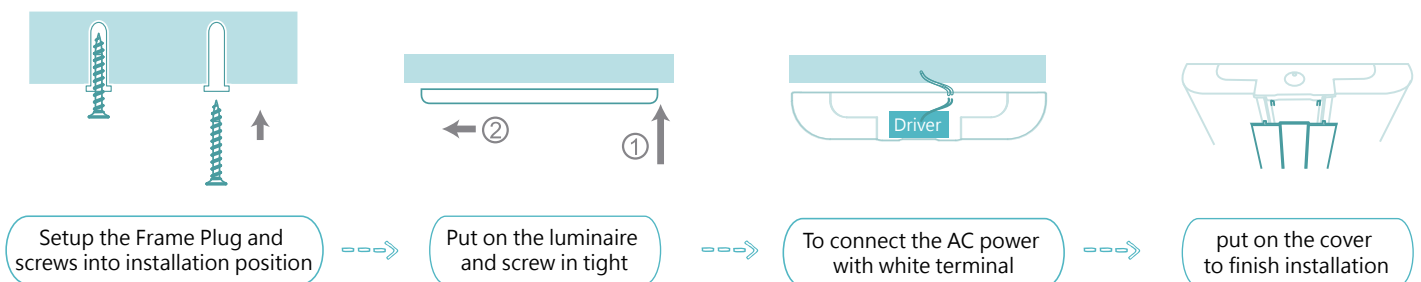


Replace to **46W**  
2' Retrofit light



## Product identity

- Integrated design with LED and driver built in.
- Unique multiple reflection design delivers uniform light with low glare.
- Large beam angle design and 12% uplight enhance the spatial brightness.
- Elegant arc appearance, not easy to accumulate dust on luminaire's surface.
- Ideal replacement for fluorescent tubes, suitable for corridor, supermarket or general indoor space.
- Energy-saving, eco-friendly for the environment.
- Innovation Award in Taiwan Int'l Lighting Show.



## Recommended area



Supermarket / Office / Home / Hospital / Commercial spaces

## Specification

Model	Dimension	Power Consumption	Color Temperature	Lumious Flux	Luminous Efficiency	Illumination (1m)	Illumination (2m)	Beam angle
DP252-18YC	607 x 200 x 37.8 mm	17.1	○ 5700K ● 4000K	1750 lm	102 lm/W	420 lux	105 lux	140°/ 110°
DP477-35YC	1195 x 200 x 37.8 mm	32.6 W	○ 5700K ● 4000K	3470 lm	106 lm/W	832 lux	208 lux	
DP477-55YC		53.6 W	○ 5700K ● 4000K	5000 lm	93 lm/W	1200 lux	300 lux	

Installation : direct mounted ; Operating voltage : 90~264 VAC ; Life design : 40,000 hours

CRI : 80 ; Class 2 ; Usage temperature : -20°C ~ +40°C

Y indicates Color Temperature of luminaire , D : 4000K ; G : 5700K;

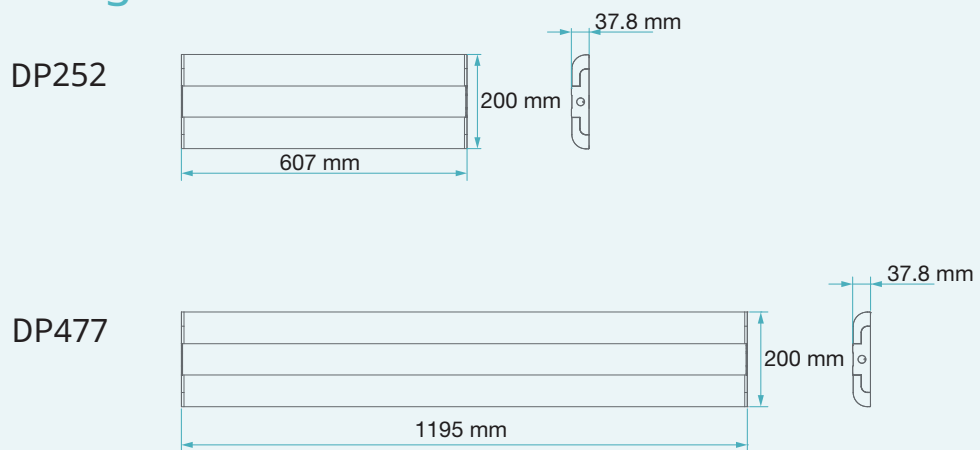
Connecting up to 10

Tolerance range of product's specification accepts in ± 10%

The above specification is the standard value , the company reserves the right to revise the specification without prior notice to improve reliability, function or design.



## Mechanical Drawing

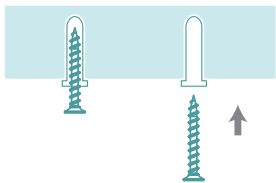


# epoLoveWing™ Wall Light

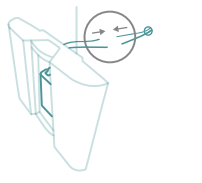


## Product identity

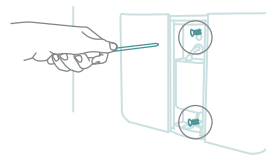
- Bright, comfortable and uniform light, low glare.
- Stylish arc appearance, creates floating vision feeling.
- Integrated design with LED and driver built in.
- Large beam angle design and 8%~10% uplight enhance the spatial brightness.
- Wall-mounted and surface-mounted type.



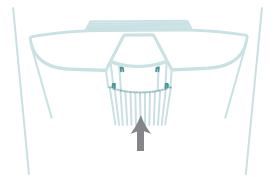
Setup the Frame Plug and screws into installation position



Connecting AC wire with driver

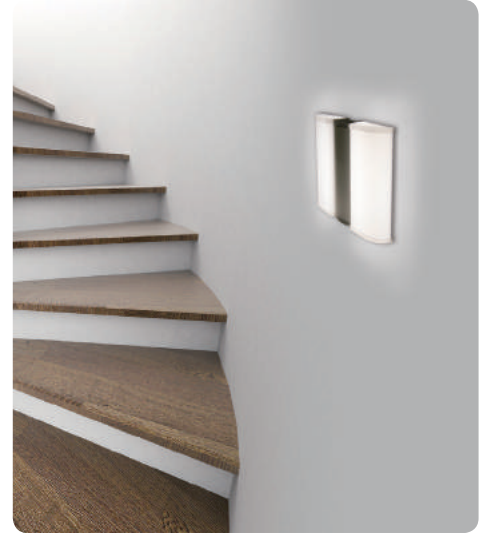


Put on the luminaire and screw in tight



put on the cover to finish installation

## Recommended area



Home / Commercial spaces / Office

## Specification

Model	Dimension	Power Consumption	Color Temperature	Lumious Flux	Luminous Efficiency	Illumination (1m)	Beam angle
<b>DP110-13YC</b>	168 x 225 x 46 mm	12.5 W	● 4000K	820 lm	66 lm/W	200 lux	130° / 128°
			● 3000K				

Installation : wall-mounted / direct mounted ; Operating voltage : 90-264 VAC ; Life design : 40,000 hours  
CRI : 80 ; Class 2 ; Usage temperature : -20°C ~ +40°C

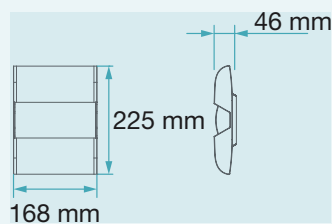
Y indicates Color Temperature of luminaire , B : 3000K ; D : 4000K

Tolerance range of product's specification accepts in ± 10%

The above specification is the standard value , the company reserves the right to revise the specification without prior notice to improve reliability, function or design.



## Mechanical Drawing





# LED Down Light



**TAIWAN**  
EXCELLENCE 2014

### ◆ LED edge-lit

Large and harmony emitting area without double image.



### ◆ Elegant arc design



### ◆ Super slim

Lightweight design with 2~5 cm thickness.



### ◆ Energy-saving

Easy installation and energy saving up to 60%.

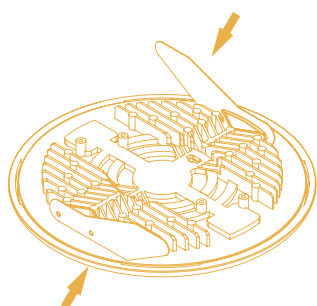
# LED Down Light Premium



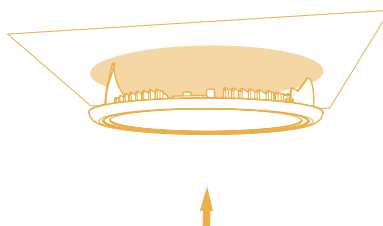
※ED060-12YR

## Product identity

- LED edge-lit technology, uniform light , ultra-thin design ( 2-5cm ), easy to use in narrow space.
- Narrow frame to increase wider emitting area.
- Ideal replacement for traditional 26W CFL down light.
- Energy-saving, eco-friendly for the environment.
- Taiwan Excellence Award / LED inside Aurora Award / Innovation Award in Taiwan Int'l Lighting Show.



Move two side's springs of the Down Light inward.



Insert both spring buckles into the cut-out hole to finish installation the down light into position.

## Recommended area



Supermarket / Office / Home / Commercial spaces

## Specification

Model	Dimension	Power Consumption	Color Temperature	Lumious Flux	Luminous Efficiency	Illumination (1m)	Illumination (2m)	Beam angle
ED060-12YR-1	Ø 186 x 19 mm (6")	12.1 W	○ 5000K	810 lm	67 lm/W	280 lux	70 lux	110°/ 110°
			● 4000K	730 lm	60 lm/W	260 lux	65 lux	
			● 3000K					

Installation : recessed ; Operating voltage : 90~264 VAC ; Life design : 40,000 hours

CRI : 80 ; Class 3 ; Usage temperature : -20°C ~ +40°C

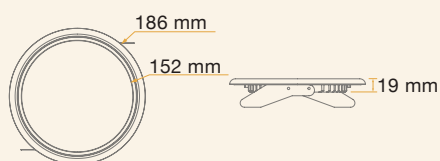
Y indicates Color Temperature of luminaire , B : 3000K ; D : 4000K ; F : 5000K

Tolerance range of product's specification accepts in ± 10%

The above specification is the standard value , the company reserves the right to revise the specification without prior notice to improve reliability, function or design.



## Mechanical Drawing



6-Inch



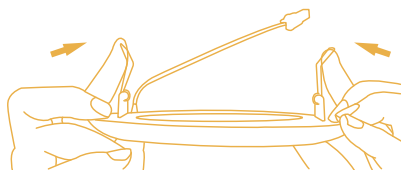
Cut-out  
Unit: mm

# LED Down Light Economic

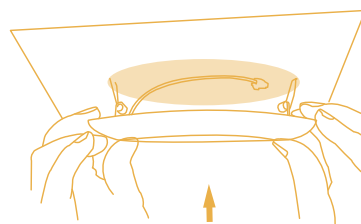


## Product identity

- LED edge-lit technology, uniform light.
- Ultra-thin design with well heat dissipation structure, easy to use in narrow space.
- Anti-dripping on the back side, suitable for various interior space.
- Ideal replacement for traditional 26W CFL down light.



Move both spring buckles of the down light backward.



Insert both spring buckles into the cut-out hole to finish installation the down light into position.

## Recommended area



Market / Office / Home / Commercial spaces

## Specification

Model	Dimension	Power Consumption	Color Temperature	Lumious Flux	Luminous Efficiency	Illumination (1m)	Illumination (2m)	Beam angle
ED060-11YR-3	Ø 180 x 31 mm (6")	10.9 W	○ 5000K	860 lm	79 lm/W	440 lux	110 lux	81.5° / 81.5°
			● 4000K					
			● 3000K	780 lm	72 lm/W	400 lux	100 lux	
ED080-23YR-1	Ø 240 x 31 mm (8")	22.6 W	○ 5000K	2050 lm	91 lm/W	1080 lux	270 lux	
			● 4000K					
			● 3000K	1850 lm	82 lm/W	980 lux	245 lux	

Installation : recessed ; Operating voltage : 90~264 VAC ; Life design : 40,000 hours

CRI : 80 ; Class 3 ; Usage temperature : -20°C ~ +40°C

Y indicates Color Temperature of luminaire , B : 3000K ; D : 4000K ; F : 5000K

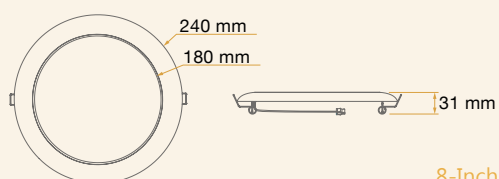
Tolerance range of product's specification accepts in ± 10%

The above specification is the standard value , the company reserves the right to revise the specification without prior notice to improve reliability, function or design.



## Mechanical Drawing

ED080

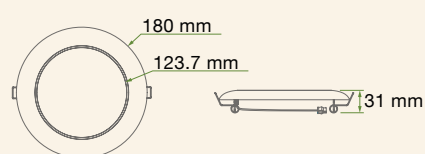


8-Inch



Cut-out Unit: mm

ED060



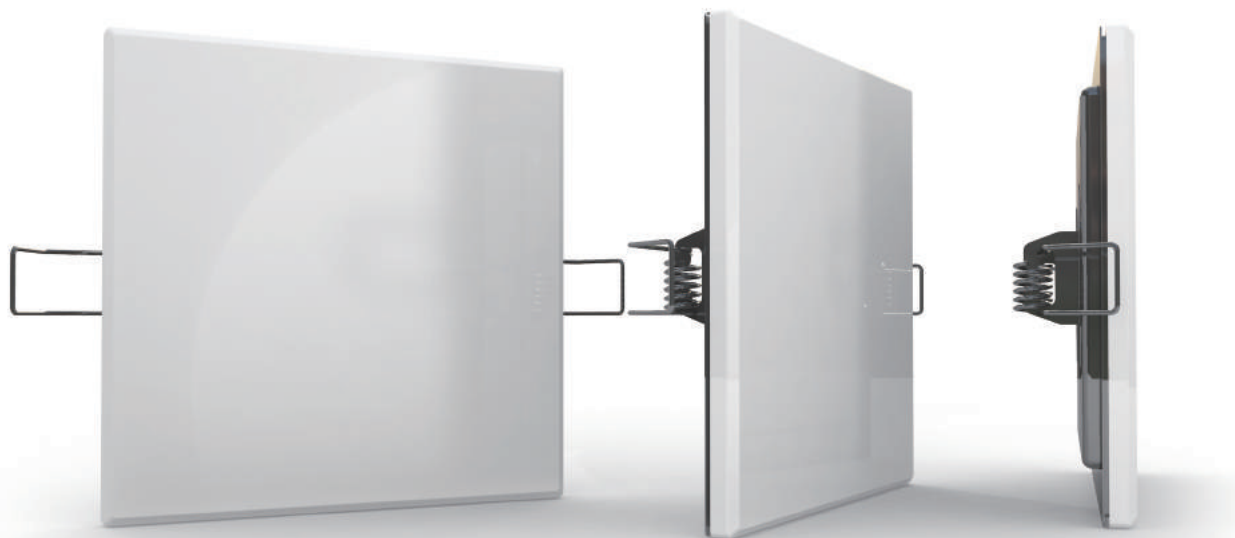
6-Inch



Cut-out Unit: mm

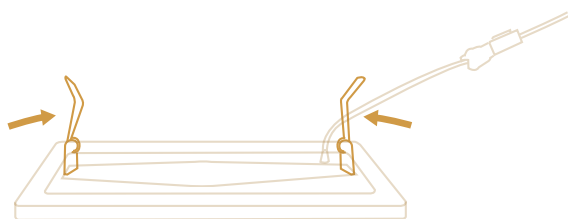


# LED Square Downlight epoXcube™

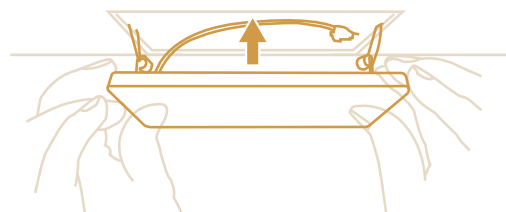


## Product identity

- Outstanding 3D shaped light-guide patent design delivers uniform and cozy light.
- Crystal appearance with seamless installation provides shimmering lighting atmosphere.
- Anti-dripping design on the back side is suitable for various home and commercial spaces.
- Taiwan Excellence Award / Innovation Award in Taiwan Int'l Lighting Show.



Move both spring buckles of the downlight backside.



Insert both spring buckles into the cut-outs hole and push the downlight into position.

## Recommended area



Lobby / Meeting room / Commercial spaces / Museum / Hospital / Home

## Specification

Model	Dimension	Power Consumption	Color Temperature	Lumious Flux	Luminous Efficiency	Illumination (1m)	Illumination (2m)	Beam angle
ED084-10YR	150 x 150 x 35.5 mm	9.8 W	○ 5000K	810 lm	83 lm/W	220 lm	55 lm	123°/ 123°
			● 2700K	735 lm	75 lm/W	200 lm	50 lm	

Installation : recessed ; Operating voltage : 90~264 VAC ; Life design : 40,000 hours  
CRI : 80 ; Class 3 ; Usage temperature : -20°C ~ +40°C

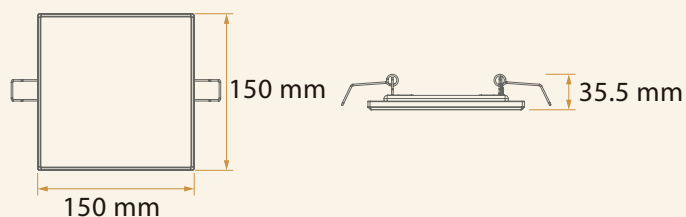
Y indicates Color Temperature of luminaire , A : 2700K ; F : 5000K

Tolerance range of product's specification accepts in ± 10%

The above specification is the standard value , the company reserves the right to revise the specification without prior notice to improve reliability, function or design.



## Mechanical Drawing



Cut-out  
Unit: mm

# Office Installation Case

Taiwan



Panasonic 2017 / 3  
LED Panel Light



Panasonic 2017 / 3  
LED Panel Light



Panasonic 2017 / 3  
LED Panel Light



Taiwan



Inventec 2016/9  
epoLoveWing™ Classic



Mean Well 2014 / 12  
LED Panel Light

# Commercial Spaces Installation Case

Taiwan



Taoyuan International Airport 2015 / 3  
LED Panel Light



Songshan Cultural Park 2014 / 12  
LED Panel Light & LED Down Light Premium



Poland & Japan & Taiwan



BMW Show Room\_Poland 2013 / 11

LED Down Light Premium



Porsche Show Room\_Japan 2014 / 2

LED Panel Light



Subaru Show Room\_Taiwan 2011 / 11

LED Panel Light

# Hospital Installation Case

Taiwan



Conference Hall  
LED Panel Light



General Ward  
LED Panel Light



Blood Collection Room  
LED Panel Light



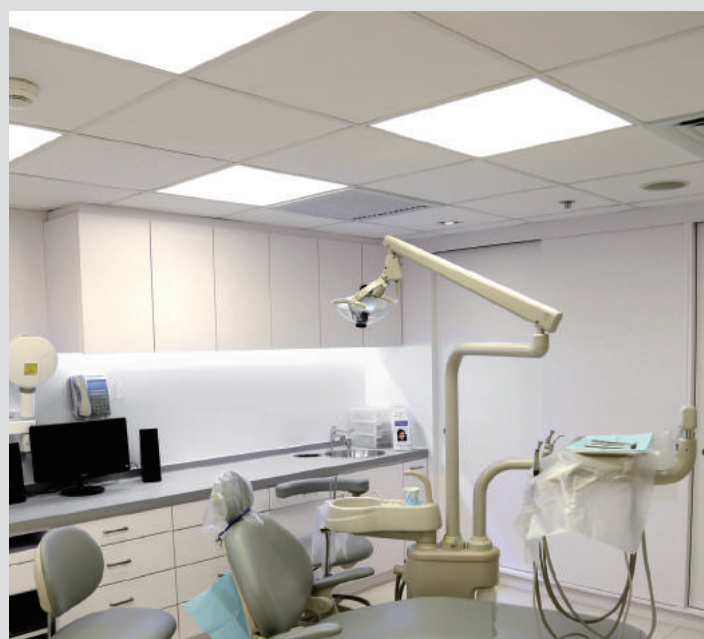
Taiwan



Health Evaluation Center  
LED Panel Light



Lounge  
LED Down Light Premium



Dental Clinic  
LED Panel Light

# Home Installation Case

Taiwan



Kitchen  
LED Panel Light



Dining room  
epoLoveWing™



Parking Garage  
epoSmiley™

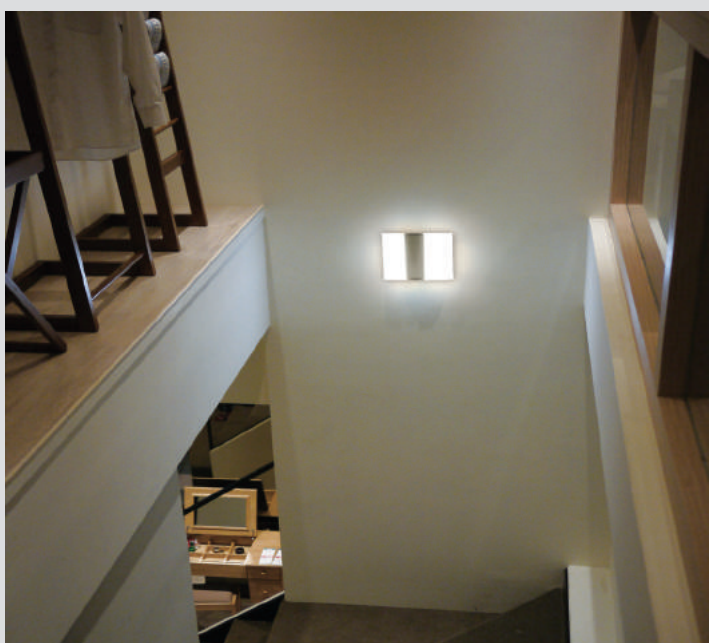


Singapore



Balcony  
epoLoveWing™ Classic

Living room  
epoLoveWing™ Classic



Stairwell  
epoLoveWing™ Wall Light

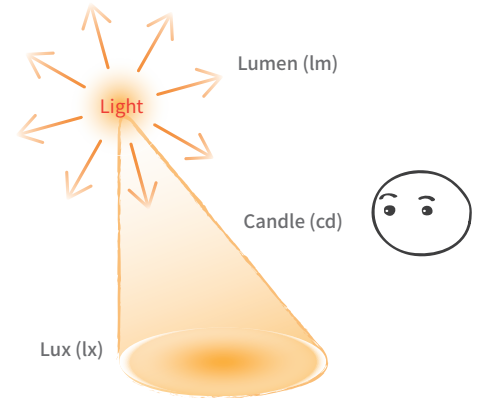
Bedroom  
epoXcube™



# LED Lighting Concepts

## Luminous Flux/ Luminous Intensity/ Illumination/ Luminous Efficacy

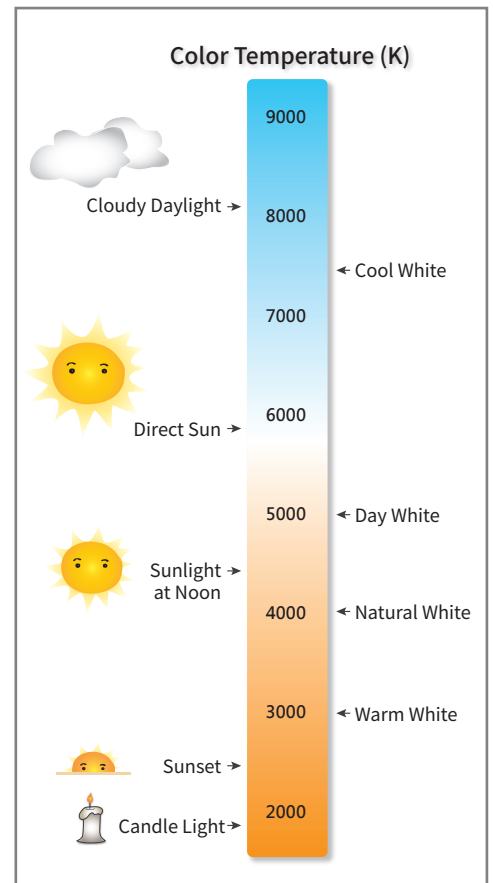
名詞	Unit	Definition
<b>Luminous Flux</b>	Lumen ( lm )	The measure of the total perceived power of light.
<b>Luminous Intensity</b>	Candle ( cd )	Luminous flux per unit solid angle/projected source area.
<b>Illumination</b>	Lux ( lx )	Luminous flux per unit area. The further the surface is from the light, the lower the Illumination is.
<b>Luminous Efficiency</b>	Lumen/ Watt ( lm/W )	The ratio of luminous flux to power, measured in lumens per watt. Lightings with higher luminous efficacy are more energy-saving.



## Color Temperature

With the unit of Absolute Temperature(Kelvin/K). In general lightings, the color temperature could be divided into three categories:

Day White	Natural White	Warm White
		
5300K(or above), with a whiter color. Giving a fluorescent tube bright white. For a fresh, energetic atmosphere.	4000K, in the between of warm and day white. For a natural, vivid atmosphere.	3000K(or below), also called as the "Light Bulb Color", with a orange tone. Giving an incandescent warm white. For a relaxing, comfortable atmosphere.
Suitable applying areas *Industrial space: Office, conference room, factory assembly line, laboratory, etc. *Home space: Study room, kitchen, studio, etc.	Suitable applying areas *Industrial space: Conference room, classroom, medical environment, etc. *Home space: Living room, dining room, bedroom, etc.	Suitable applying areas *Commercial space: Restaurant, hotel room, art display room, etc. *Home space: Dining room, bedroom, staircase, etc.



## Color Rendering



OK



NG

Color rendering is the measurement of the ability of a light source to reveal the colors of various objects faithfully in comparison with an ideal or natural light source. With the Color Rendering Index (Ra:0~100), the higher the Ra is, the closer the light source is to the ideal light, sunlight.

## Flicker Free



Flicker is the constant fluctuation of light output from on to off. It appears as stripes fluctuating by looking through camera monitors. This phenomenon occurs in most of the LED and traditional lightings, causing eye-soreness, headaches and even more severe disorders. Thus, choosing a flicker free LED lighting is of great importance.

## Eye Protection- No Blue Light Hazard



Make sure the LED lighting has passed the application “IEC 62778 (the assessment of blue light hazard to light sources and luminaires).” Blue light, the short-wavelength radiation in the range of 400 to 500 nanometers, exists in sunlight, monitors and luminaires. Being over-exposed to it for a long term of time could cause retinal macular degeneration.

## Long Lifetime with High Lumens Maintenance



Low quality LED lightings usually have majority amount of luminous flux lost over time. In comparison, high quality LED luminaires own a low lumens depreciation LED light source, giving the lighting itself a long lifespan.

## Products From a Trust-worthy Brand/Company



Purchase products from company with professional technology and industrial innovation capability. The company should be confident in the quality of their own products, not only willing but able to provide warranty and after-sales service.

Item	Epoch LED Lightings	Other LED Lightings	Traditional Lightings
Cozy Light	By applying edge-lit or the patent optical technologies,delivers uniform light with large emitting area and large beam angle.	Visible LED chips are easy to be seen.	Emphasize on high brightness, having higher glaring chances.
Glare Free	Adopted with optic-level light guide panel and diffusion plate, increasing the evenness of light, decreasing the sense of glare.		
Flicker Free	By using high quality LED power to reach flicker free.	Under-designed LED lightings have a high possibility to flicker.	Flicker.
Thermal Design	Enhanced thermal structures, ensuring luminaire lifetime and installing/maintaining without getting hands burnt.	Without great thermal design, decreases the LED lifetime.	High thermal value, causing temperature rise and with the risk of getting hands burnt during installation/ maintenance.
International Safety Certification	CNS (Taiwan), GS (Germany), CE (EU), “IEC 62778” No blue light hazard.	Quality differs.	Quality differs.
Place of Production	Produced in clean room factory in Taiwan.	Taiwan / China	Taiwan / China
Warranty	Headquarter provides warranty.	Differs	None

# Calculation of Power Saving



## Epoch LED Panel Light v.s. T5 / T8 Lighting / Other Panel Light

Item	Epoch LED Panel Light (EF331)	T8 Tube * 4 (60 cm)	T5 Tube * 4 (60 cm)	Other Panel Light (60 x 60 cm)
Lifetime Design	40,000 hrs	6,000 hrs	24,000 hrs	30,000 hrs
Luminous Decay Rate (Year)	< 3 %	> 10 %	≅ 5 %	< 5 %
Power Consumption	32.2 W	92 W	62 W	40 w
Luminous efficiency	Max 112 lm/w	≅ 65 lm/w	≅ 90 lm/w	Differs

**Good** (next to Epoch LED Panel Light)

**65 % Power Saving** (arrow pointing from T8 Tube \* 4 to Epoch LED Panel Light)



## Epoch LED Down Light v.s. CFL Down Light

Item	Epoch LED DL - Premium(6" )	Epoch LED DL - Economic (6" )	CFL DL (6" )
Thickness	< 2 cm	< 3.5 cm	10 cm
Lifetime Design	40,000 hrs	40,000 hrs	10,000 hrs
Luminous Decay Rate (Year)	< 3 %	< 3 %	< 10%
Power Consumption	12.1 W	10.9 W	26 W
Luminous efficiency	Max 67 lm/w	Max 79 lm/w	Differs

**Good** (next to Epoch LED DL - Premium)

**Good** (next to Epoch LED DL - Economic)

**58 % Power Saving** (arrow pointing from CFL DL to Epoch LED DL - Economic)



## epoLovewing™ v.s. T8 / T5 / LED Lighting

Item	epoLovewing™ (DP477)	T8 Tube * 2 (120 cm)	T5 Tube * 2 (120cm)	LED Tube * 2 (120 cm)
Lifetime Design	40,000 hrs	6,000 hrs	24,000 hrs	30,000 hrs
Luminous Decay Rate (Year)	< 3 %	> 10 %	≅ 5 %	< 5 %
Power Consumption	32.6 W	92 W	62 W	40 W
Luminous efficiency	Max 106 lm/w	≅ 65 lm/w	≅ 90 lm/w	Differs

**Good** (next to epoLovewing™)

**65 % Power Saving** (arrow pointing from T8 Tube \* 2 to epoLovewing™)

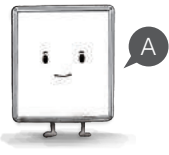


## epoSmiley™ v.s. T8 / T5 / LED Lighting

Item	epoSmiley™ (DP485)	T8 Tube * 1 (120 cm)	T5 Tube * 1 (120 cm)	LED Tube * 1 (120 cm)
Lifetime Design	40,000 hrs	6,000 hrs	24,000 hrs	30,000 hrs
Luminous Decay Rate (Year)	< 3 %	> 10 %	≅ 5 %	< 5 %
Power Consumption	28 W	38 ~ 46 W	32 W	22 ~ 30 W
Luminous efficiency	Max 110 lm/w	≅ 65 lm/w	≅ 90 lm/w	Differs

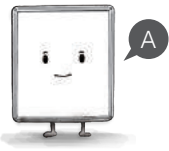
**Good** (next to epoSmiley™)

## Q LED lightings are averagely more costly, are they worth buying?



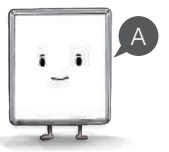
Purchasing LED lightings rather than conventional ones are for sure higher at starting cost. However, LED lighting provides significant advantages in its high luminous efficacy, eco-saving, long lifetime, and a more uniform cozy lighting. Additionally, the true cost favors LED regard for its zero maintenance for a much longer lifetime and one-third power consumption than conventional ones. You may recover the acquisition cost and profit in just 1~3 years, along with a better quality lighting environment. Such beneficial investment is definitely worth doing.

## Q Do LED lightings dazzle?



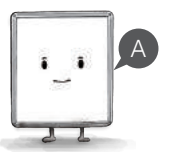
Visible and dazzling LED chips are easy to be seen if the lightings are under-designed. Not to mention if the paired powers are low in quality, causing flicker, leading to headaches and vision disorders. Lighting products from Epoch are applied with edge-lit, multi-reflection technologies, solving the issues and deliver comfortable uniform lighting.

## Q Do LED lightings have blue light hazard?



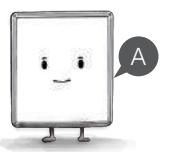
Blue light exists in all kinds of monitor and luminaire lighting, even in natural sunlight. It normally does not harm human bodies unless one is over-exposed to it for a long period of time. Lighting products from Epoch are equipped with large emitting area, thus dispersing energy to decline the risk of the hazard to the most. The products are also certified with German TÜV and IEC 62778, ensuring the positive safety to humans.

## Q What happens if the LED lightings stop working?



The features, long lifetime and durability, are indispensable to high quality LED lightings. The LED light source of Epoch Lighting products are 40,000 hours in the lifetime. By contrast, power drivers are usually shorter in its lifetime. Therefore, the stop-working situation can usually be solved by simply replacing a new power. Supposing it's still unsolved, Epoch's headquarter provides warranty maintenance service.

## Q Are LED lightings stable in quality?



Make a guaranteed purchase by selecting lighting products which are internationally certified, produced by a company which possesses technology strength and provides warranty. Epoch Lighting is the own brand of Epoch Chemtronics, a back light module company with its own factories with decades of professional experiences. Based on the background, products of Epoch Lighting are advanced in technology and are also produced in clean room with strict quality check in every productive process, ensuring high product quality. Epoch Lighting is positively a trustworthy brand that deserves to be your first choice in LED Lightings.

Epoch Lighting  
www.lighting-epoch.com



Epoch Chemtronics Corp.  
5F-1 , No . 35 , Hsin-Tai Rd . , Chupai City , Hsinchu Hsien , Taiwan ( 30252 )



Exclusive Distributor  
Unirange Trading  
41 Tyrwhitt Road, Singapore 207539  
t : 639 639 69 | e : sales@unirange.com | w : www.unirange.com

