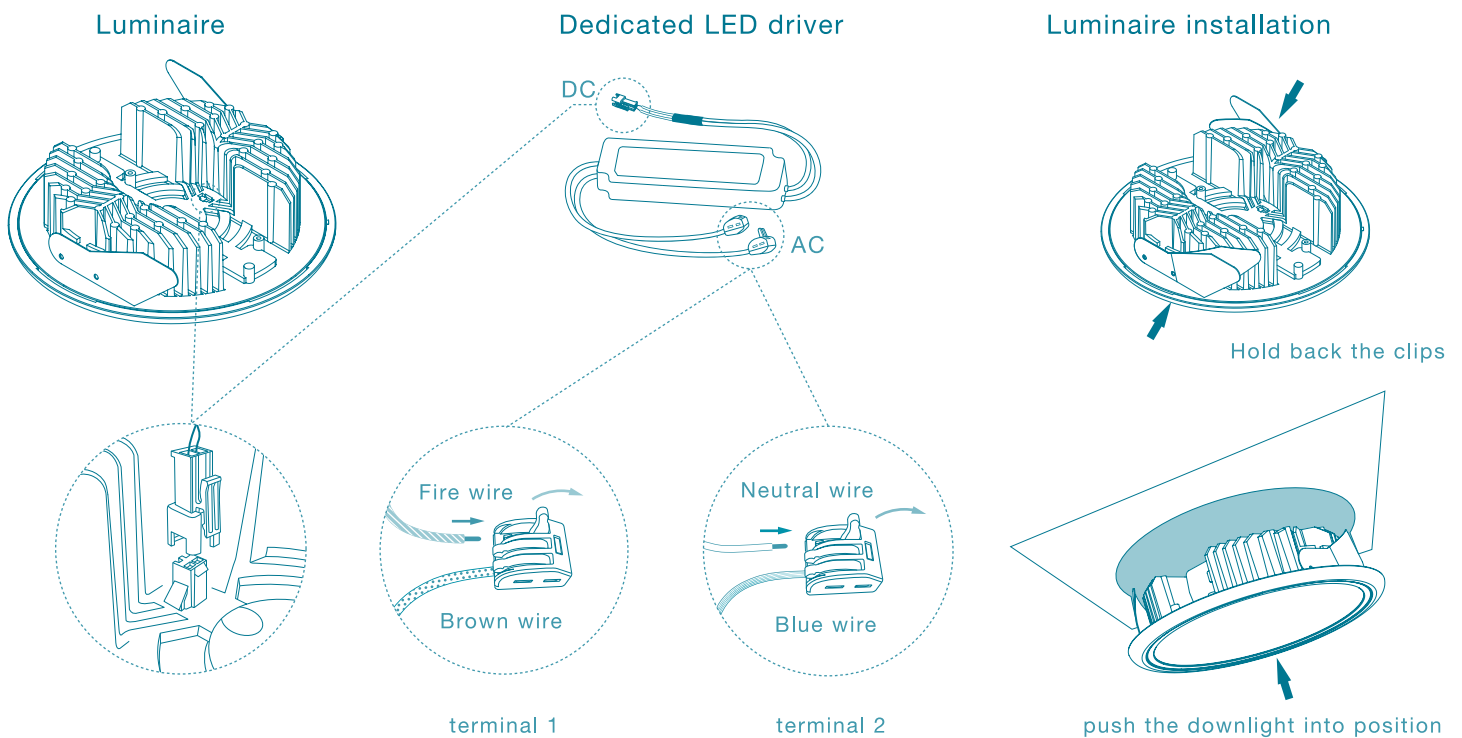


# LED Down Light

## Installation guide



A. Driver installation diagram

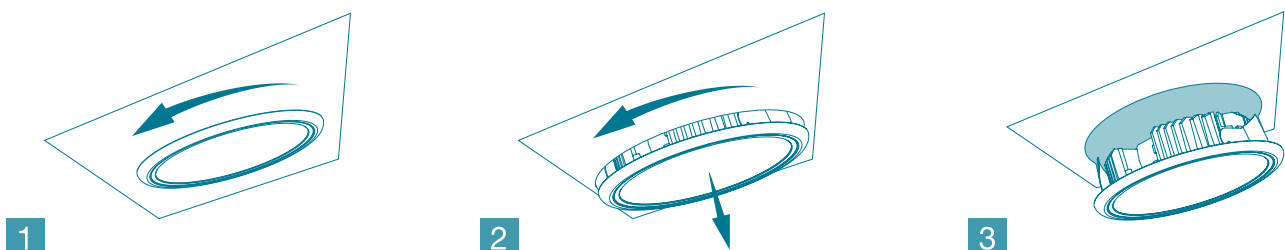
B. Luminaire and ceiling installation diagram

Overall Area	6"	6" (Ultra-slim series)	5"	4"
Thickness of Ceiling	5-15 mm	5-9 mm	5-9 mm	5-9 mm
Cut-Outs	150 mm	150 mm	125 mm	100 mm

1. This luminaire is matched to particular cut-outs on ceiling (please save 50mm for depth up from the ceiling). Please confirm the cut-out size before installation.
2. Connect the luminaire to the LED driver into correct position and direction(Diagram a) :  
Black wire link to black wire, and so as red one. There is a black connector at the end of black and red wire, please adjust to a proper position to connect the luminaire.
3. Connect the driver and power cord into correct position and direction(Diagram b) :  
Connect the power cord's ACL (Fire wire) with LED driver's brown wire (Fire wire), and connect the power cord's ACN (Neutral wire) with LED driver's blue wire (Neutral wire).
4. Hide the LED driver after connection, hold back the clips and push the downlight into position. (Diagram c)

### Notice:

If you need to take off the luminaire, please hold the frame and rotate counterclockwise to certain angel and then pull it down. Please do not pull it down DIRECTLY. (Diagram 1、2、3)



# LED Down Light

## Precautions



This luminaire is for indoor use only.



This luminaire should be connected to its dedicated LED driver.



Input voltage must comply with the range as specified on the LED driver.



Operating temperature range: -20°C~+40°C  
Storage temperature range: -20°C~+50°C

- It is recommended that installation should be performed by professionals or certified electricians; and ensure that the power is turned off during installation, maintenance, and cleaning.
- Do not remove the warranty and manufacture labels, nor disassemble, repair, or modify the luminaire.
- Please ensure that the luminaire is complete and intact, and wires are not damaged nor broken before installation. In addition, please do not connect the luminaire with other electrical equipments in series.
- Please mind the sharp angles around the luminaire, and ensure that the luminaire is installed firmly to prevent it from falling and causing injuries.
- The LED driver is NOT recommended to lock directly on the back of the luminaire.
- Wipe the luminaire gently by soft cloth without any solvent when performing cleaning tasks to prevent the luminaire's surface from scratching or damaging.
- Please use the original carton provided when performing storing and delivery tasks; do not drop it, nor place items and weight on it.

## Simple troubleshooting

Problem	Possible causes	Troubleshooting
Unable to connect the luminaire to the LED driver.	Wrong plugging direction for the connector.	Change the plugging direction.
	Connector malfunction.	Please contact the distributor for customer service.
Luminaire fails to light up.	Power is not on.	Switch on the power.
	Connector or power cord is not properly connected.	Ensure all wires are properly connected.
	Luminaire or LED driver malfunction.	Please connect the luminaire with a driver which operates normally. If the luminaire works well, the original driver can be considered as malfunction. On the contrary, if the luminaire can not work, it is assumed malfunction. Please contact the distributor for customer service for repair.
Luminaire lights up partially, or does not light up at all.	LED light source malfunction.	Please contact the distributor for customer service.
If you need to take off the light		Please hold the frame and rotate clockwise to certain angel and then pull it down.

## Warranty

1. Service: Under normal usage, if the product is found to be defective within its warranty period, please send the product and the receipt back for repair.
2. The warranty is void if:
  - Incorrect voltage was applied to the product, or the product was installed improperly, or used in abnormal environment / under abnormal usage, or its precautions were not followed.
  - The product did not use the dedicated LED driver provided by us.
  - The product is repaired, modified, or altered in any way; or, the warranty and the manufacture labels were removed, damaged, or unrecognizable.
  - The failure was caused by the buyer's misbehavior or carelessness during transportation, delivery, or storage process after purchasing.
  - The failure was caused by natural disasters such as earthquake, or nibbles by mice or bugs etc.
  - The product was used or operated under special and harsh environments; for example, damp or sulphuric area, seashore area, on the ship, or other corrosive and erosive environments.
3. For further information regarding the product, please refer to our website or contact customer service.

## Luminaire accessories

Dedicated LED driver x 1

