

Precautions



This luminaire is for indoor use only.



Input voltage must comply with the range as specified on the LED driver.



Operating temperature range : -20 °C ~ +40 °C
Storage temperature range : -20 °C ~ +50 °C

- It is recommended that installation should be performed by professionals or certified electricians; and ensure that the power is turned off during installation, maintenance, and cleaning.
- Do not remove the warranty and manufacture labels, nor disassemble, repair, or modify the luminaire.
- Please ensure that the luminaire is complete and intact, and wires are not damaged nor broken before installation. In addition, please do not connect the luminaire with other electrical equipments in series.
- Please mind the sharp angles around the luminaire, and ensure that the luminaire is installed firmly to prevent it from falling and causing injuries.
- Wipe the luminaire gently by soft cloth without any solvent when performing cleaning tasks to prevent the luminaire's surface from scratching or damaging.
- Please use the original carton provided when performing storing and delivery tasks; don't drop or place heavy objects on it.

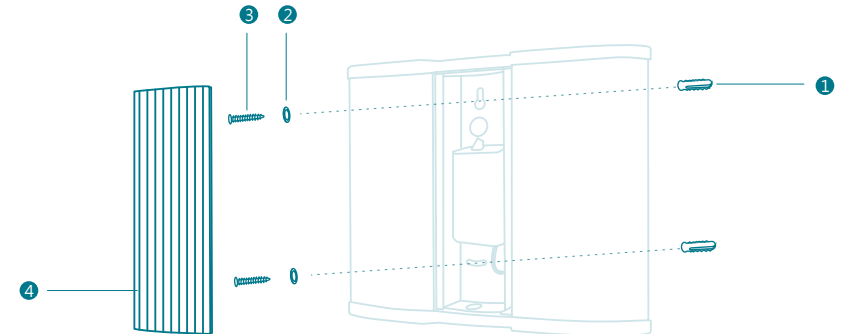
Simple troubleshooting

| Problem | Possible causes | Troubleshooting |
|--|---|--|
| Luminaire fails to light up. | ▶ Power is not on. | Switch on the power. |
| | ▶ Power cord is not properly connected. | Ensure all wires are properly connected. |
| | ▶ Luminaire or LED driver malfunction. | Please contact the distributor for customer service. |
| Luminaire lights does not light up at all. | ▶ LED light source malfunction. | Please contact the distributor for customer service. |

Warranty

- Service: Under normal usage, if the product is found to be defective within its warranty period, please send the product and the receipt back for repair.
- The warranty is void if :
 - Incorrect voltage was applied to the product, or the product was installed improperly, or used in abnormal environment / under abnormal usage, or its precautions were not followed.
 - The product did not use the dedicated LED driver provided by us.
 - The product is repaired, modified, or altered in any way; or, the warranty and the manufacture labels were removed, damaged, or unrecognizable.
 - The failure was caused by the buyer's misbehavior or carelessness during transportation, delivery, or storage process after purchasing.
 - The failure was caused by natural disasters such as earthquake, or nibbles by mice or bugs etc.
 - The product was used or operated under special and harsh environments; for example, damp or sulphuric area, seashore area, or on the ship, or other corrosive and erosive environments.
- For further information regarding the product, please refer to our website or contact customer service.

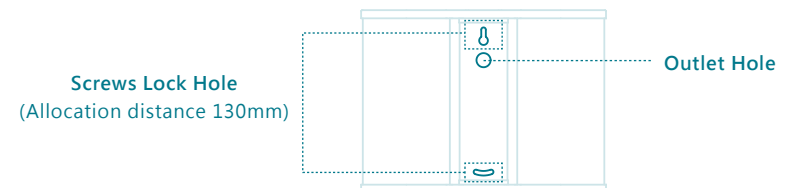
Luminaire accessories



Luminaire accessories

- ① Anchor x 2
- ② Washer x 2
- ③ Self-tapping screw x 2
(Applicable for solid wooden panels or wooden angle bars that are above 20mm thick, or solid cement walls and brick walls)
- ④ White cover x 1

Hole on luminaire diagram



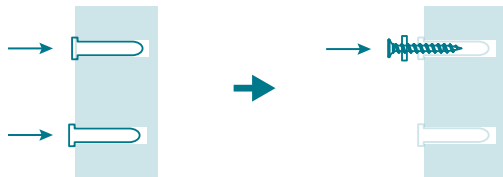
Installation guide

This luminaire is not only can be wall-mounted to be mounted vertically on the wall, but also can be mounted horizontally on the concrete or wooden ceiling. Both of installation steps are the same.

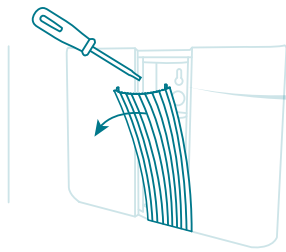


Please turn off the AC power.

- 1 Pull out the in-house power cord from the junction box in the wall.
- 2 Mark the position of the screw holes onto the ceiling or wall.
- 3 Drill into the marked positions and insert two anchors into the holes. Then, fasten two screws with washer about halfway into the anchors.

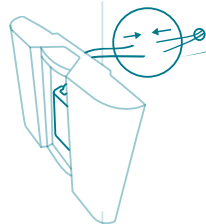


- 4 Pull up the white cover, hang up the luminaire on the screw temporarily and start to wiring. (You may insert a flat screwdriver into the gap at the side of the white cover to help pull it up.)



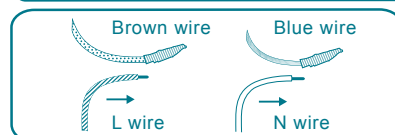
Insert the slotted screwdriver into the gap at the two sides of junction between white cover and luminaire, then pull the white cover.

- 5 Connect the AC side of the LED driver to the power cord in the ceiling/wall with insulation tape or terminals.

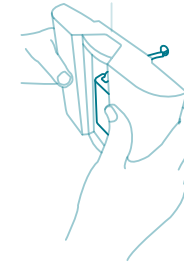


Prepare the insulation tape by self

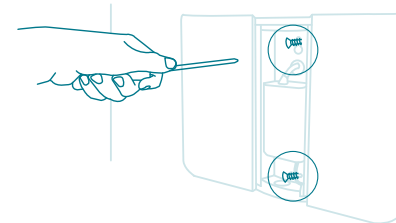
Connect the power cord's L wire with brown wire(L wire) of power cable, and connect the power cord's N wire with blue wire(N wire)of power cable



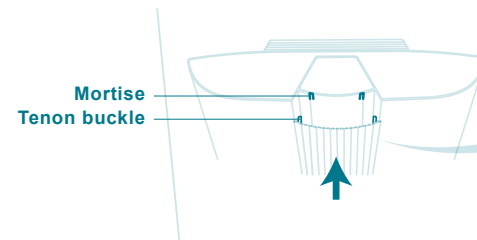
- 6 After the wiring is completed, conceal the wires behind the luminaire.



- 7 Tighten the screws on the anchors to secure the luminaire.

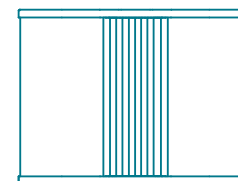


- 8 Replace back the white cover onto the luminaire to complete the installation.



Press hard on the short side of white cover. You will hear a sound when the tenon buckle into mortise, indicating buckled correctly, then keep pressing the white cover hard to the other along the cover to complete installation.

Wall-mounted diagram



Surface-Mounted diagram

