

## Precautions



This luminaire is for indoor use only.



Input voltage must comply with the range as specified on the LED driver.



Operating temperature range : -20 °C ~+40 °C  
Storage temperature range : -20 °C ~+50 °C

- It is recommended that installation should be performed by professionals or certified electricians; and ensure that the power is turned off during installation, maintenance, and cleaning.
- Do not remove the warranty and manufacture labels, nor disassemble, repair, or modify the luminaire.
- Please ensure that the luminaire is complete and intact, and wires are not damaged nor broken before installation. In addition, please do not connect the luminaire with other electrical equipments in series.
- Please mind the sharp angles around the luminaire, and ensure that the luminaire is installed firmly to prevent it from falling and causing injuries.
- The LED driver is NOT recommended to fix directly on the back of the luminaire.
- Wipe the luminaire gently by soft cloth without any solvent when performing cleaning tasks to prevent the luminaire's surface from scratching or damaging.
- Please use the original carton provided when performing storing and delivery tasks; don't drop or place heavy objects on it.

## Simple troubleshooting

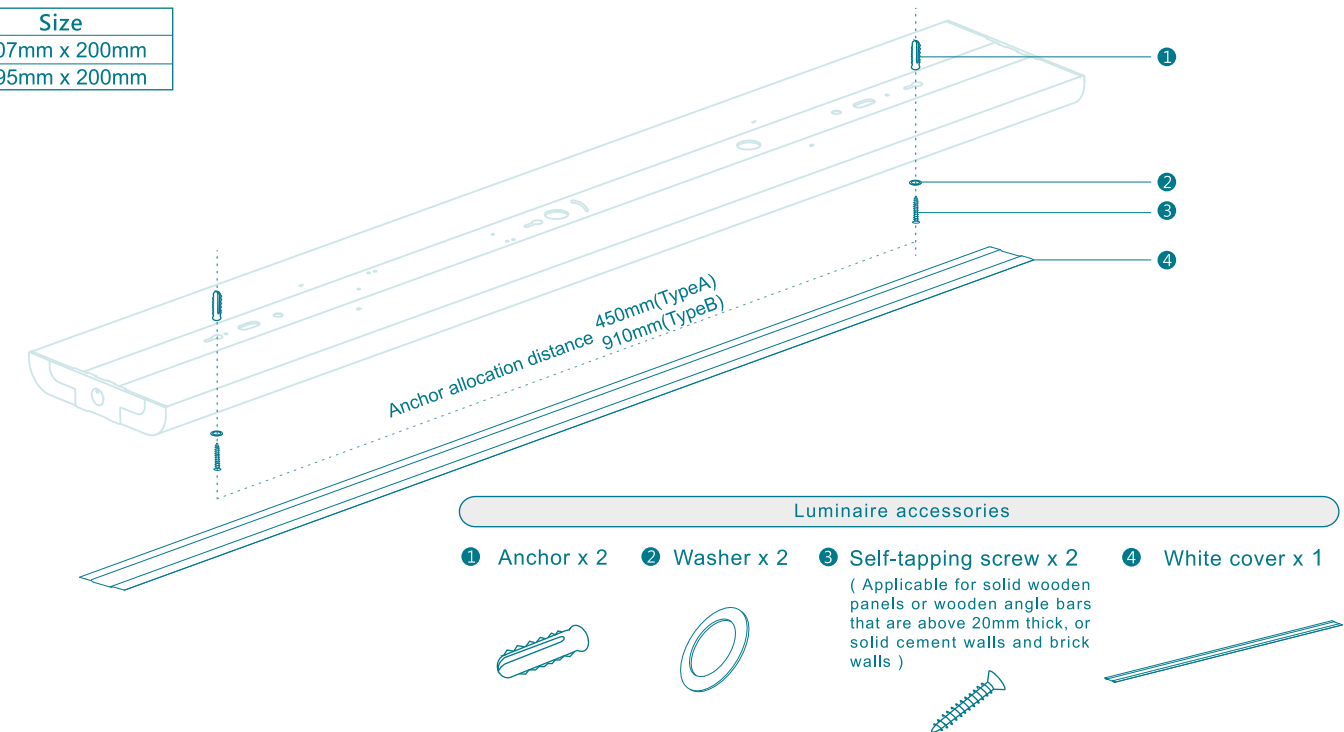
Problem	Possible causes	Troubleshooting
Luminaire fails to light up.	▶ Power is not on.	Switch on the power.
	▶ Connector or power cord is not properly connected.	Ensure all wires are properly connected.
	▶ Luminaire or LED driver malfunction.	Please contact the distributor for customer service.
Luminaire lights does not light up at all.	▶ LED light source malfunction.	Please contact the distributor for customer service.

## Warranty

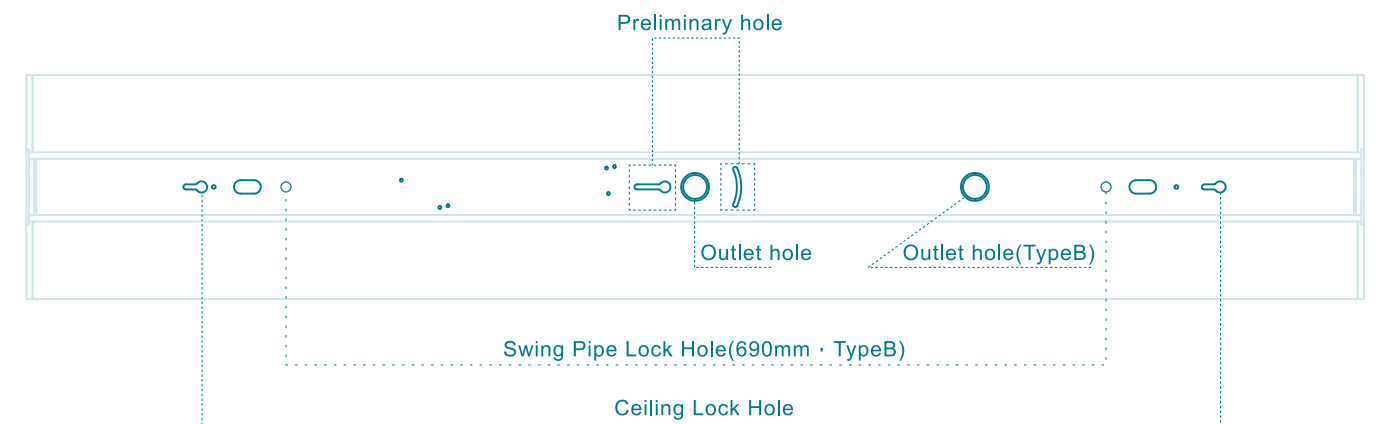
- Service: Under normal usage, if the product is found to be defective within its warranty period, please send the product and the receipt back for repair.
- The warranty is void if :
  - Incorrect voltage was applied to the product, or the product was installed improperly, or used in abnormal environment / under abnormal usage, or its precautions were not followed.
  - The product did not use the dedicated LED driver provided by us.
  - The product is repaired, modified, or altered in any way; or, the warranty and the manufacture labels were removed, damaged, or unrecognizable.
  - The failure was caused by the buyer's misbehavior or carelessness during transportation, delivery, or storage process after purchasing.
  - The failure was caused by natural disasters such as earthquake, or nibbles by mice or bugs etc.
  - The product was used or operated under special and harsh environments; for example, damp or sulphuric area, seashore area, or on the ship, or other corrosive and erosive environments.
- For further information regarding the product, please refer to our website or contact customer service.

## Luminaire accessories and Anchor allocation position

Type	Size
A	607mm x 200mm
B	1195mm x 200mm



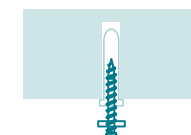
## Hole on luminaire diagram



## Installation guide

### Luminaire allocation

- Referring to the diagram of "Hole on luminaire", drill the hole to fix the two anchors, and screw the self-tapping screws and washers half into the two anchors.
  - Align "the two ceiling lock hole" of the luminaire and "two half-screwed self-tapping screws", and push the luminaire up.
  - Move the luminaire to be latched by the ceiling lock hole of the luminaire.
  - After latching with the ceiling lock hole, screw the other half of self-tapping screws, and finish the luminaire allocation.

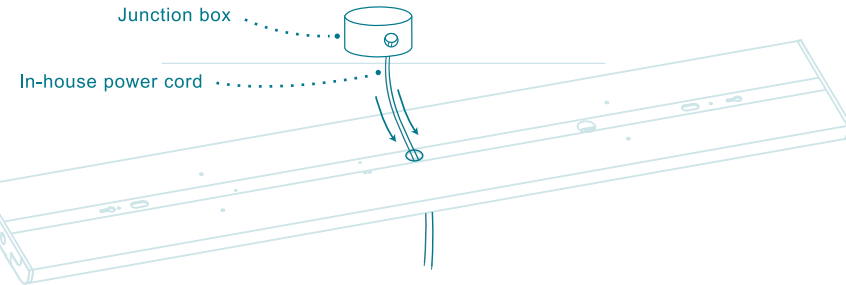


Ceiling lock hole diagram

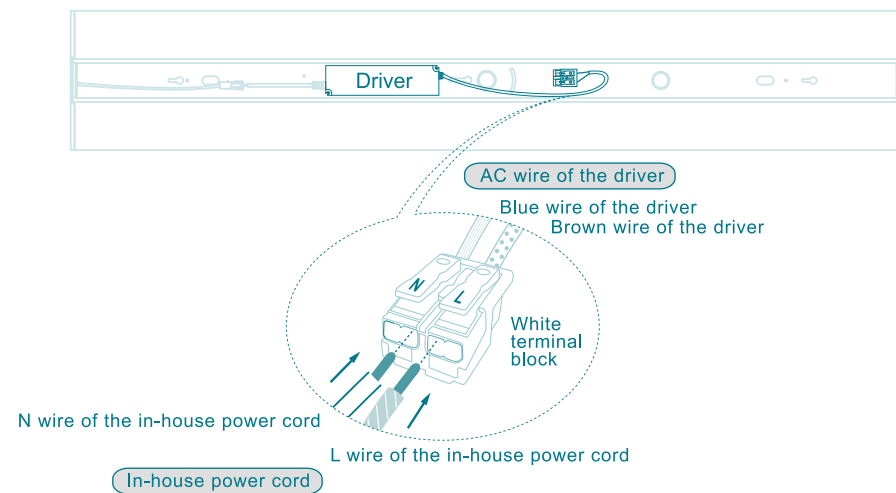


## Wiring

- 2 Pull the in-house power cord from the junction box, and then pass it through the outlet hole of the luminaire.

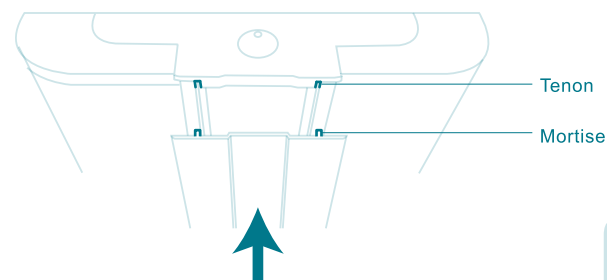


- 3 Insert the in-house power cord into white terminal block which fixed inside the luminaire.

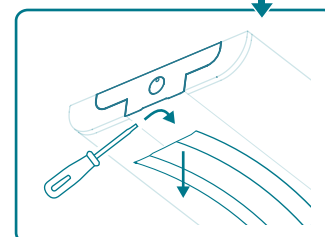


## Install white cover, finish installation

- 4 Press hard on the short side of white cover. You will hear a sound when the tenon buckle into mortise, indicating buckled correctly, then keep to press the white cover hard to the other side along the cover to complete the installation.



⚠ If need to open the white cover, insert the slotted screwdriver into the junction position at each of two sides between white cover and luminaire, then pull the white cover up.

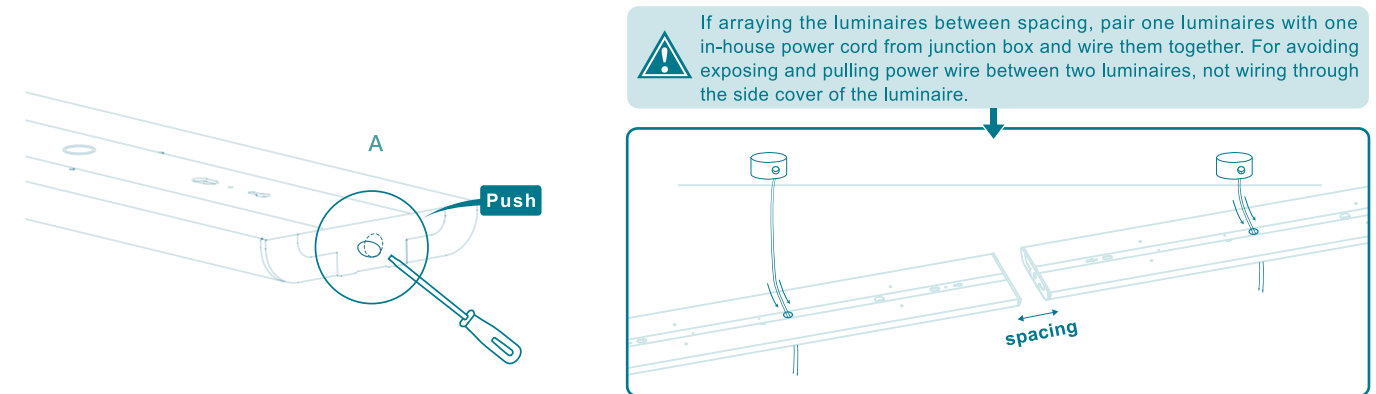


## Arraying luminaires seamlessly

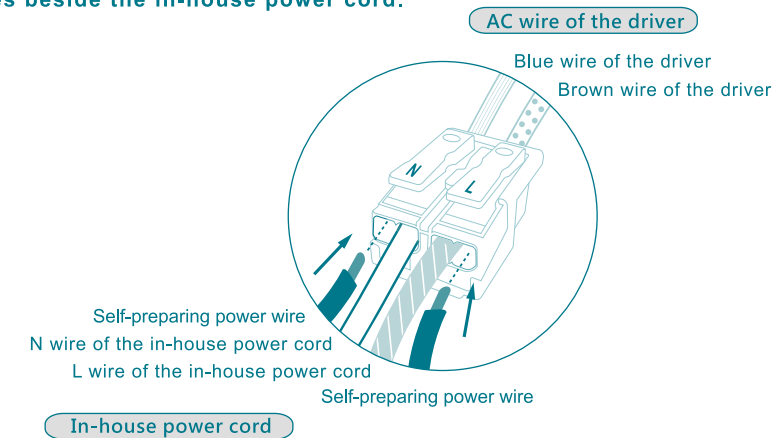
- 1 Luminaires can be arrayed together seamlessly. Maximum can array 10 pieces. (Need to prepare the power wire while arraying the luminaire by self.)



- 2 After finishing installation of the first luminaire (A), push the round hole at the side cover for preparing wiring.



- 3 For the first luminaire, push L and N button of the white terminal block, insert self-preparing suitable power wire into the holes beside the in-house power cord.



- 4 Pull the power wire through out the round hole to second luminaire and insert power wire into the white terminal block. For arraying many luminaires seamlessly, please refer to above description and repeat the same installation process.

