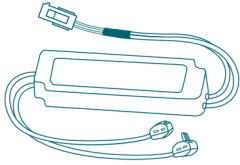


Direct Mounted Type Luminaire accessories

① Dedicated LED driver x 1



② Cavity wall anchor

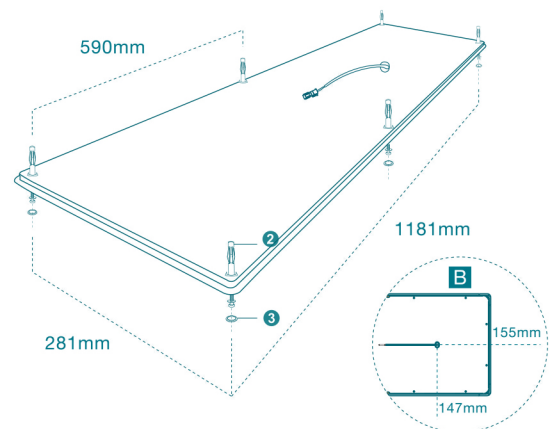
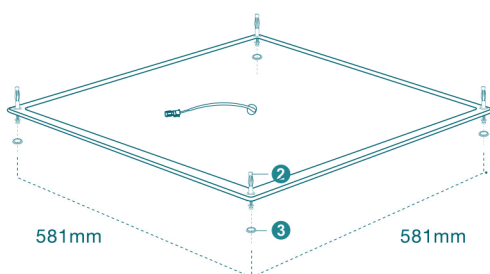
(Applicable for wooden panels or calcium silicate boards that are between 3~7mm thick)



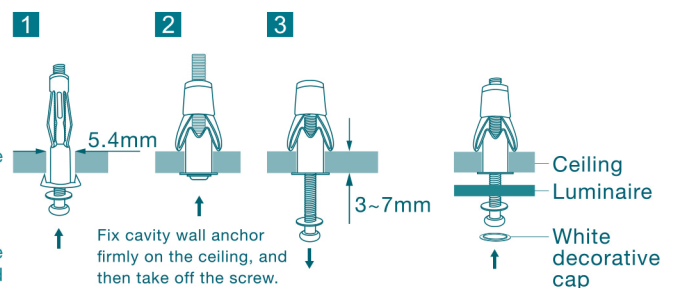
③ White decorative cap



Installation guide

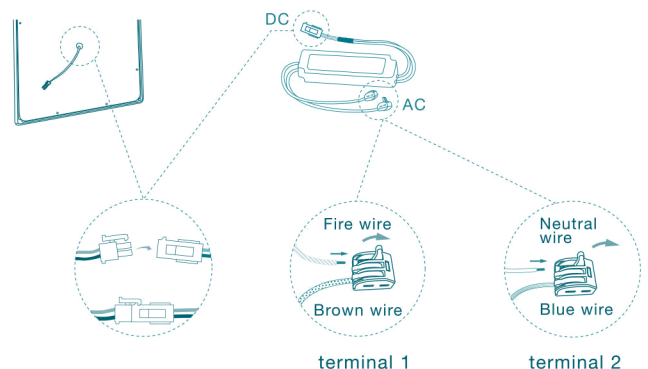


1. In order to place the driver, cut out a hole (around 8cm diameter) right above the outlet of the wire on the ceiling. (Diagram A \ B)
2. Determine the position where the luminaire is to be installed; pierce holes and screw cavity wall anchors into the mounting surface (wall ceiling), then unscrew the screws from the cavity wall anchors (Diagram C).
3. Connect the luminaire to the LED driver by the following steps: (Diagram D)
 - a. Connect the luminaire and the driver into correct position and direction: Connect the white connector from the red-black wire of the driver with the white connector from the LED panel in correct position and direction (red wire to red wire, black wire to black wire). The connectors should click perfectly with one another.
 - b. Connect the driver and power cord into correct position and direction : Connect the power cord's ACL (Fire wire) with LED driver's brown wire (Fire wire), and connect the power cord's ACN (Neutral wire) with LED driver's blue wire (Neutral wire).
 - c. Precautions: Terminals are provided at AC side of dedicated LED driver. Pull up the orange clip of the terminal to the end, insert wires completely to prevent from falling loosely, and finally push back the orange clip of the terminal to fix the wires completely.
4. Place the LED driver into pre-determined spaces within the ceiling.
5. Mount the luminaire onto the ceiling using cavity wall anchor previously unscrewed. Finally, insert the white decorative caps on top of the screw holes to complete installation (Diagram E).



C. Cavity wall anchor installation diagram

E. Luminaire and white decorative cap location



D. Driver installation diagram